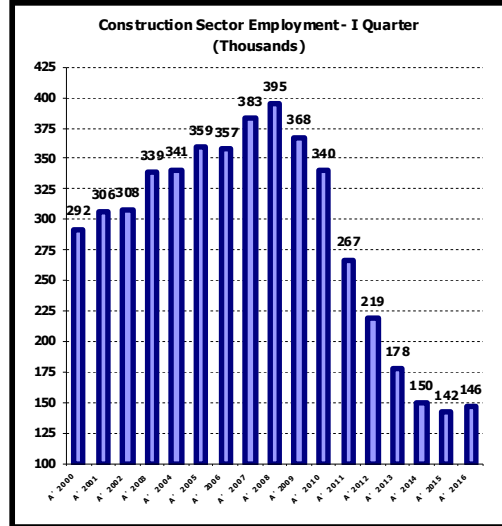
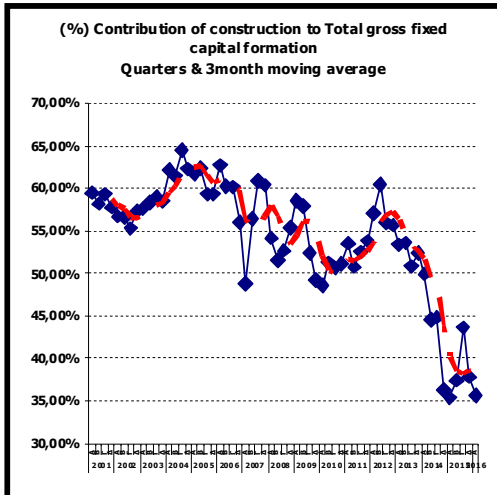


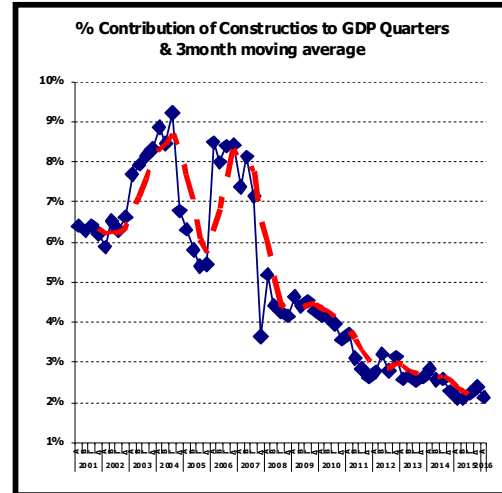
Source: SATE, figures from Hellenic Statistical Authority
DIAGRAM-1



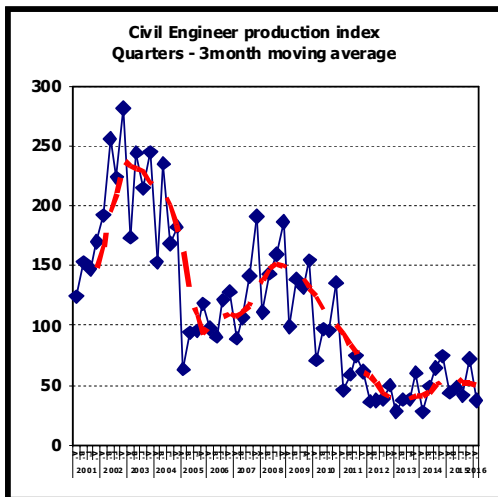
Source: SATE, figures from Hellenic Statistical Authority
DIAGRAM-2



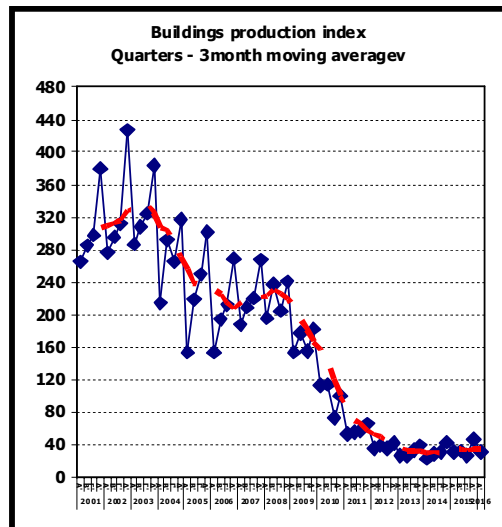
Source: SATE, figures from Hellenic Statistical Authority
DIAGRAM-3



Source: SATE, figures from Hellenic Statistical Authority
DIAGRAM-4



Source: SATE, figures from Hellenic Statistical Authority
DIAGRAM-5

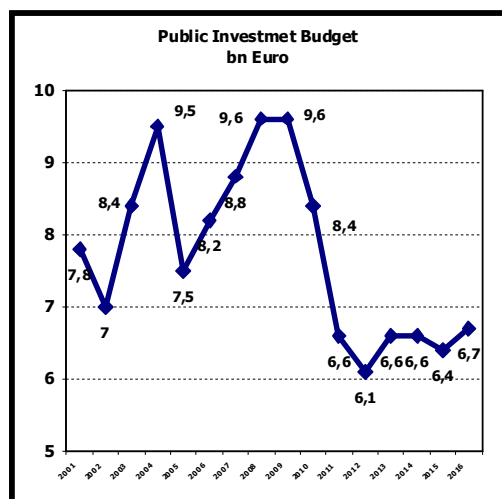


Source: SATE, figures from Hellenic Statistical Authority
DIAGRAM-6

TABLE -1

Total data of basic economic magnitudes in the Construction Section							
Value in thousands of Euros							
2013							
NACE Rev.2 Division	Number of Enterprises	Turnover from Construction Activities	Turnover from Building Activities	Turnover from Civil Engineer Activities	Production Value	Added Value in Factor Costs	Investments
41	21.565	2.108.847	2.126.186	416.902	4.509.110	1.543.591	740.815
42	5.303	1.876.799	2.792	2.493.483	2.963.052	1.717.996	284.273
43	57.754	2.077.849	14.517	116.344	2.765.798	1.075.721	184.998
TOTAL	84.622	6.063.494	2.143.495	3.026.730	10.237.960	4.337.308	1.210.086
2008							
Nace Rev.2	Number of Enterprises	Turnover from Construction Activities	Turnover from Building Activities	Turnover from Civil Engineer Activities	Production Value	Added Value in Factor Costs	Investments
41	37.412	8.183.586	8.437.171	557.722	9.365.463	2.504.116	1.514.944
42	8.546	3.653.436	267.302	4.008.913	4.574.198	1.292.214	231.791
43	68.194	4.313.565	44.386	227.412	4.940.199	2.069.061	300.085
TOTAL	114.152	16.150.587	8.748.858	4.794.047	18.879.860	5.865.392	2.046.820
2013/2008							
Nace Rev.2	Number of Enterprises	Turnover from Construction Activities	Turnover from Building Activities	Turnover from Civil Engineer Activities	Production Value	Added Value in Factor Costs	Investments
41	-42,4%	-74,2%	-74,8%	-25,2%	-51,9%	-38,4%	-51,1%
42	-37,9%	-48,6%	-99,0%	-37,8%	-35,2%	32,9%	22,6%
43	-15,3%	-51,8%	-67,3%	-48,8%	-44,0%	-48,0%	-38,4%
TOTAL	-25,9%	-62,5%	-75,5%	-36,9%	-45,8%	-26,1%	-40,9%

Source: SATE, figures from Hellenic Statistical Authority



Source: SATE, figures from State Budget

DIAGRAM-7